

SMART HJC 20B Quick Start Guide

ENGLISH

Ride Connected

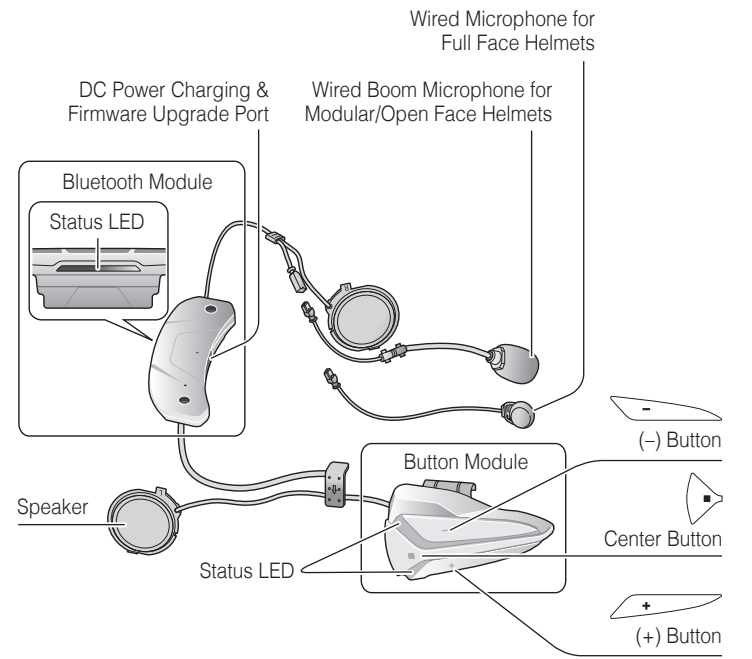
Getting Started

Modular/Open Face Helmet Installation

Full Face Helmet Installation

Button Operation

Bluetooth Pairing Phone, MP3 and GPS

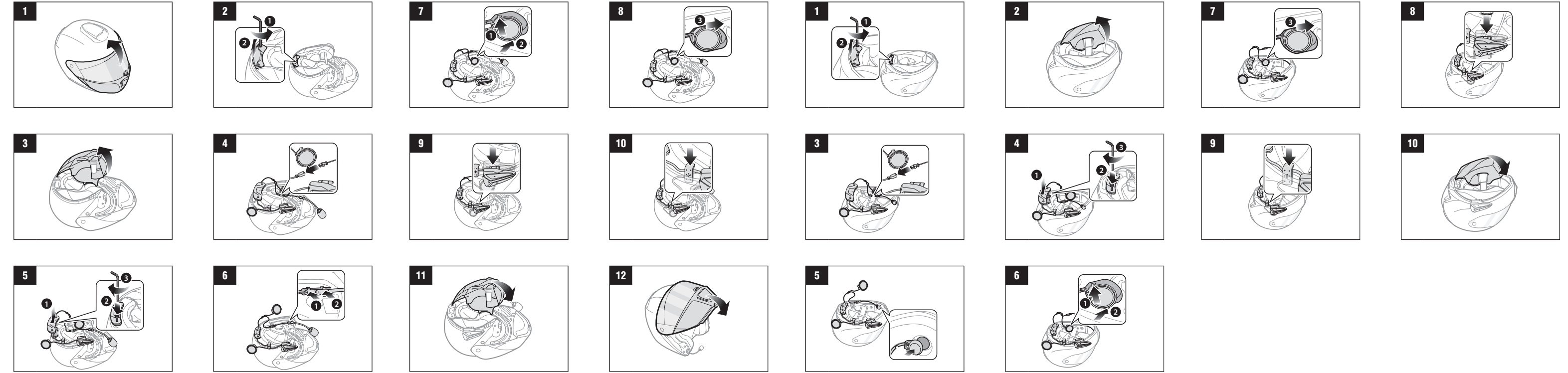


Blast your favorite tunes, talk over the intercom with your buddies, hear directions from your GPS and more, all through your headset. With built-in Bluetooth® capabilities, Audio Multitasking™, HD speakers and a microphone using Advanced Noise Control™, technology has never felt so minimal or freeing.

- BLUETOOTH 4.1
- INTERCOM 1.6 KM (1 MILE)*
- EIGHT-WAY INTERCOM
- CUSTOM HELMET FIT
- AUDIO MULTITASKING
- ADVANCED NOISE CONTROL
- VOICE COMMAND
- MUSIC SHARING

HJC Corporation
hjchelmets.com
Customer Support: www.smarthjc.com/bt

1. This product comes with a Quick Start Guide, which is a basic version of the User's Guide. **A FULL VERSION OF THE USER'S GUIDE CAN BE DOWNLOADED AT WWW.SMARTHJC.COM/BT.**
2. Update this product for free with the latest firmware to fully enjoy the new advanced features built into this product. Visit www.smarthjc.com/bt to see how to update your product.



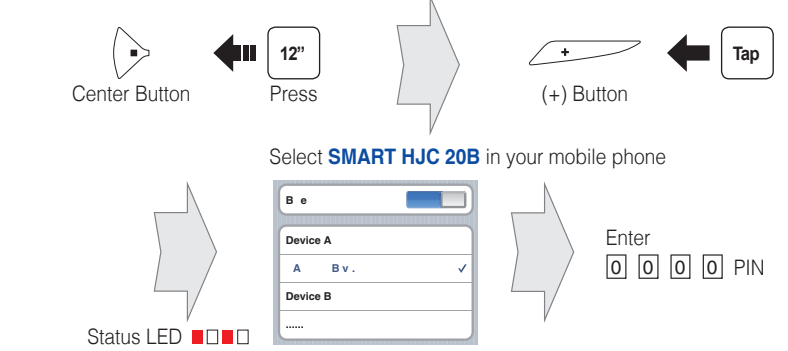
- Tap Tapping
- Double Tapping
- Press for 1 sec
- Press and Hold

Power On/Off

- Powering On**
(+) Button
Center Button
Press
- Powering Off**
(+) Button
Center Button
Tap

Volume Adjustment

- Volume Up**
(+) Button
Tap
- Volume Down**
(-) Button
Tap



Mobile Phone

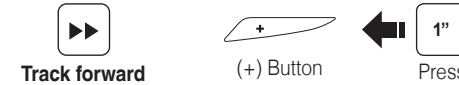
- Answer
Center Button
Tap
- End / Reject
Center Button
Press
- Voice Dial
Center Button
Press
- Speed Dial
(+) Button
Press

SMART HJC 20B compatible HJC helmets can be found by scanning the QR code of the product box.

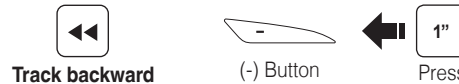
Music



Center Button ← 1" Press

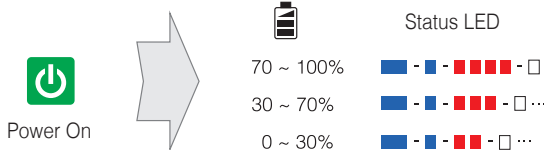


(+) Button ← 1" Press



(-) Button ← 1" Press

Battery Check



Configuration Menu



Center Button ← 12" Press

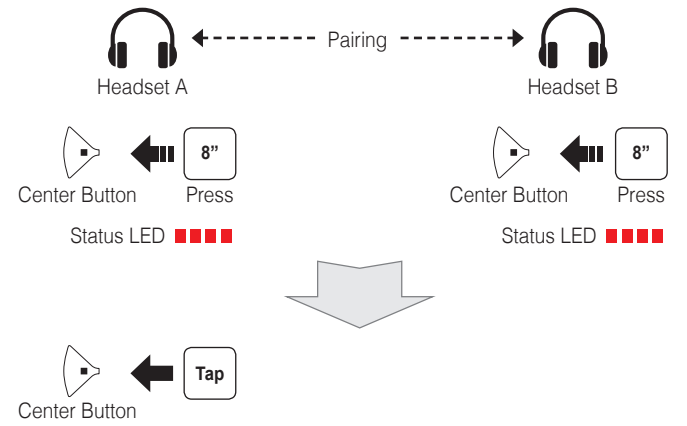
Using the SMART HJC Device Manager

You can upgrade the headset's firmware and configure its settings directly from your PC or Apple computer. Download the **SMART HJC Device Manager**, please visit www.smarthjc.com/bt.

Using the SMART HJC BT Smartphone App

You can configure its settings directly from your smartphone. Download the **SMART HJC BT App** from Google Play (Android) or App Store (iOS).

Intercom Pairing



Start / End Intercom



Center Button ← Tap

1st Friend



Center Button ← Tap

2nd Friend



Center Button ← Tap

3rd ~ 9th Friend, Cancel



Center Button ← Tap

3rd Friend and above



Center Button ← Tap

1 ~ 10, Cancel



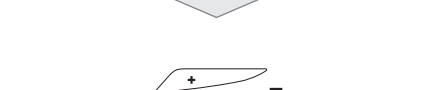
Center Button ← Tap

Save Preset While Seeking



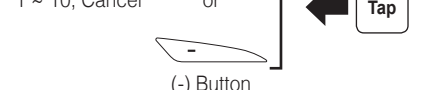
Center Button ← 3" Press

Save Preset While Scanning



Center Button ← Tap

Save



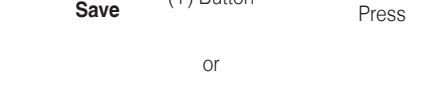
Center Button ← Tap

Save



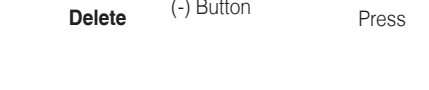
Center Button ← Tap

Save



Center Button ← Tap

Save



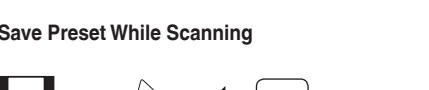
Center Button ← Tap

Radio Scan Up FM Band



Center Button ← 1" Press

Start or Stop



Center Button ← Tap

Save Preset While Scanning



Center Button ← Tap

Save



Center Button ← Tap

Save



Center Button ← Tap

Save



Center Button ← Tap

Radio Move to Preset Station



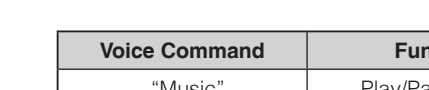
Center Button ← 1" Press

Preset [# + 1]



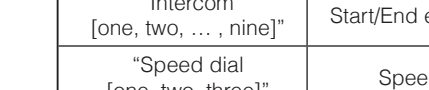
Center Button ← Tap

Save



Center Button ← Tap

Save



Center Button ← Tap

Save



Center Button ← Tap

Save



Center Button ← Tap

Voice Command



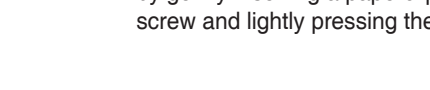
Center Button ← Tap

"Hello Sena"



Center Button ← Tap

Save



Center Button ← Tap

Save



Center Button ← Tap

Save



Center Button ← Tap

Save



Center Button ← Tap

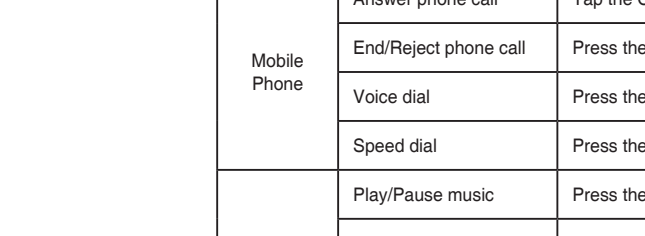
Troubleshooting

Factory Reset

If you want to restore the headset to factory default settings, use the Factory Reset in the configuration menu. The headset automatically restores the default settings and turns off.

Fault Reset

If the headset is not working properly for any reason, reset the headset by gently inserting a paperclip into the pinhole located next to the screw and lightly pressing the Fault Reset Button.



Battery Charging

Please make sure to take off your headset while charging. The headset automatically turns off during charging.

Quick Reference

Type	Operation	Button Command
Basic Operations	Power on	Press the (+) Button and the Center Button for 1 second
	Power off	Tap the (+) Button and the Center Button
	Volume adjustment	Tap the (+) Button or the (-) Button
	Voice Command	Say "Hello Sena" Tap the Center Button and the (-) Button
Mobile Phone	Answer phone call	Tap the Center Button
	End/Reject phone call	Press the Center Button for 2 seconds
	Voice dial	Press the Center Button for 3 seconds
	Speed dial	Press the (+) Button for 3 seconds
Music	Play/Pause music	Press the Center Button for 1 second
	Track forward	Press the (+) Button for 1 second
	Track backward	Press the (-) Button for 1 second

Quick Reference

Type	Operation	Button Command
FM Radio	FM radio on/off	Press the (-) Button for 1 second
	Seek forward	Double tap the (+) Button
	Seek backward	Double tap the (-) Button
Intercom	Intercom pairing	Press the Center Button for 8 seconds Tap the Center Button
	Start/End intercom	Tap the Center Button