

SENA



SR

**MOTORCYCLE BLUETOOTH®
COMMUNICATION SYSTEM**

HD SPEAKERS

QUICK START GUIDE

Downloadable Sena Software

Download the **SENA MOTORCYCLES App** on **Google Play Store** or **App Store**.



SENA MOTORCYCLES

- Device Configuration Setting

Download the following items at sena.com.



Firmware



Sena Device Manager

- Firmware upgrade
- Device configuration setting



Quick Start Guide, User's Guide

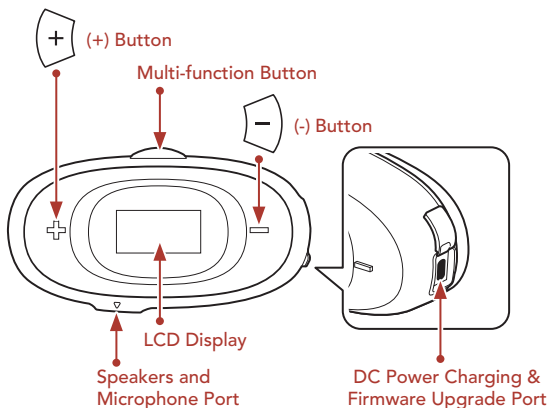
Follow us on Facebook, YouTube, Twitter and Instagram to check the latest information and helpful tips.

SENA



SENA Technologies, Inc.
Customer Support: sena.com

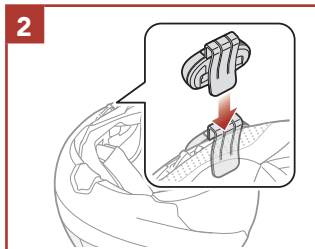
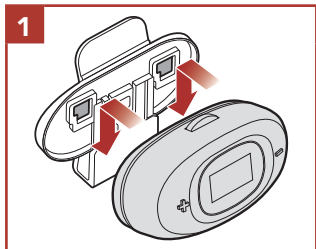
Product Details

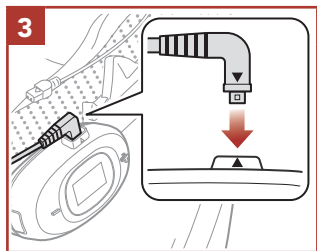


Installation

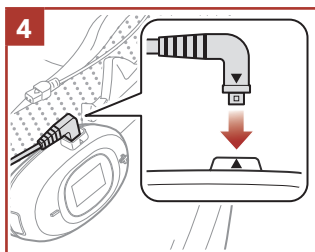
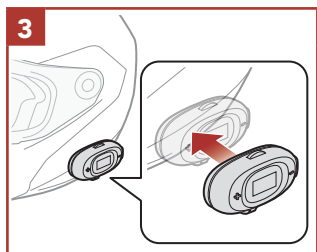
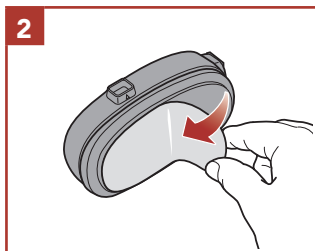
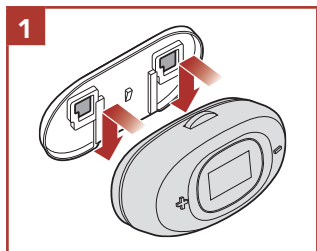
- For more information about installation, refer to the User's Guide.

Using the Clamp for Headset Main Unit

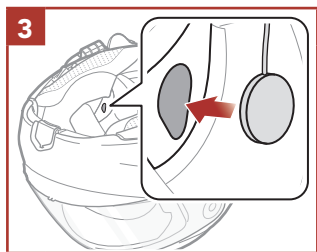
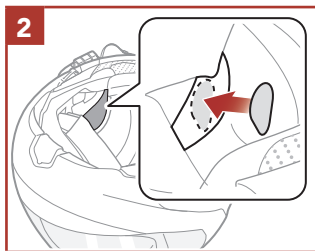
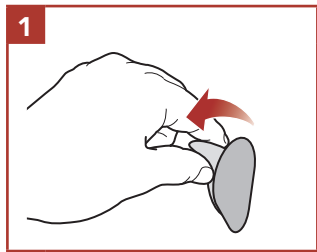




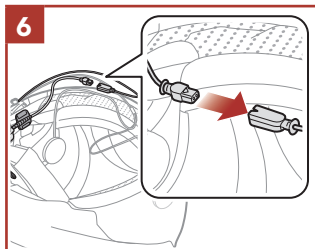
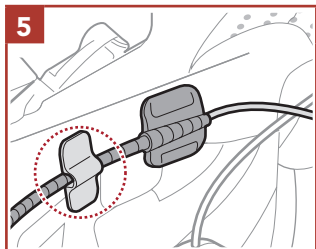
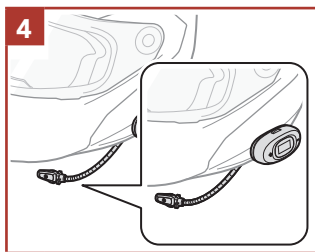
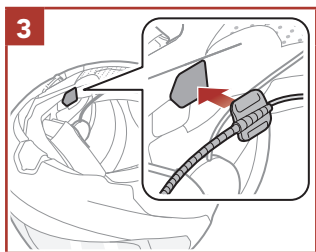
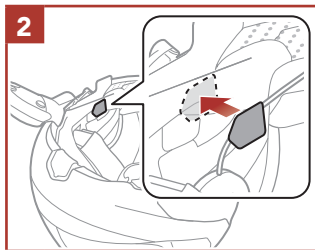
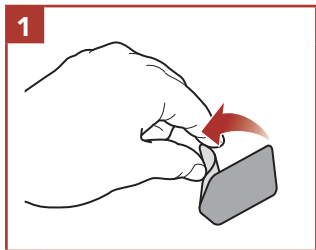
Using the Glued Surface Mounting Adapter for Headset Main Unit



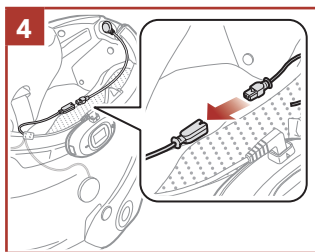
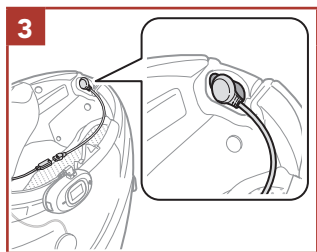
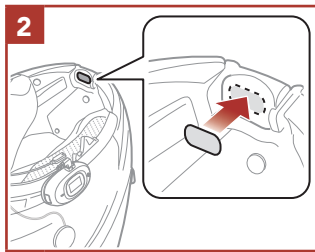
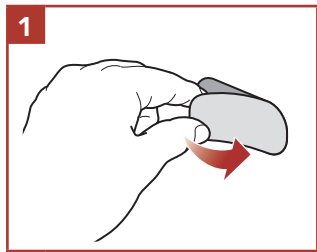
Installing the Speakers




Installing the Wired Boom Microphone



Installing the Wired Microphone



Icon Legend

 Tap button the specified number of times

 Press and Hold button for the specified amount of time

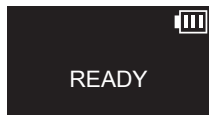
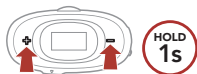


"Hello"

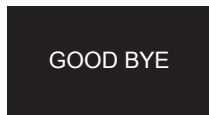
Audible prompt

Basic Operations

Powering On



Powering Off



Volume Up/Down

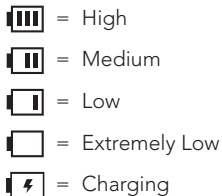
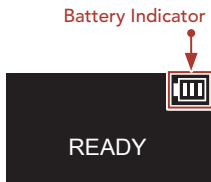


or

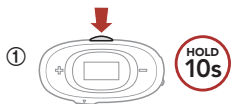


■ Checking the Battery Level

LCD Display



■ Phone Pairing



- ③ Select **5R** in the list of Bluetooth devices detected.







- The headset will enter the **Phone Pairing mode** automatically when you **initially turn on** the headset.
- For more information on phone pairing, refer to the User's Guide.

■ Using the Phone

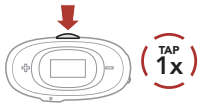
LCD Display

Call Status

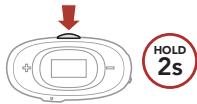


-  = Incoming Call
-  = Outgoing call
-  = On the Phone Call
-  = Reject a call

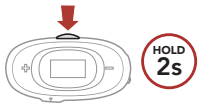
Answer a Call



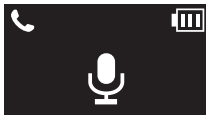
End a Call



Reject a Call

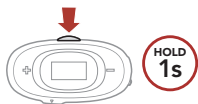


Voice Dialer



Music Control

Play/Pause



or



Track Forward

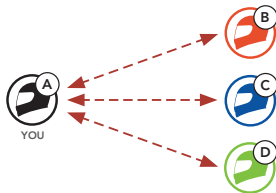


Track Backward



Bluetooth Intercom

Up to three other people can be paired with the headset for Bluetooth intercom conversations.






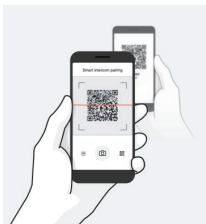
Intercom Pairing

There are two ways to pair the headset.

Using the Smart Intercom Pairing (SIP)

SIP allows you to quickly pair with your friends for intercom communication by scanning the QR code on the **SENA MOTORCYCLES App** without remembering the button operation.

- ① Pair the mobile phone with the headset.
- ② Open the **SENA MOTORCYCLES App** and tap  (**Smart Intercom Pairing Menu**).
- ③ Scan the **QR code** displayed on your friend (**B**)'s mobile phone.
 - Your friend (**B**) can display the QR code on the mobile phone by tapping  > **QR code** () on the **SENA MOTORCYCLES App**.



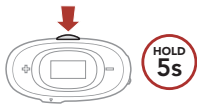
- ④ Tap **Save** and check that your friend **(B)** is paired with **you (A)** correctly.
- ⑤ Tap **Scan** (📷) and repeat steps 3-4 to pair with **Intercom Friends (C)** and **(D)**.

Note: The **Smart Intercom Pairing (SIP)** is not compatible with Sena products that use **Bluetooth 3.0** or **below**.

Using the Button



- ① **Users (You, B)** enter into **Intercom Pairing**.



🔔 "Intercom pairing"



- ② Tap the **Multi-function Button** on either headset.

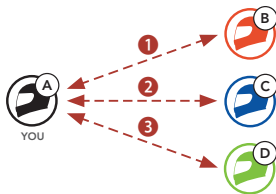


- ③ Repeat the steps above to pair with **other headsets (C and D)**.

■ Last-Come, First-Served

If the headset has multiple paired headsets for intercom conversations, the last paired headset is set as the **First Intercom Friend**.

Intercom Pairing Order

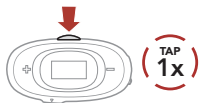


Last-Come, First-Served

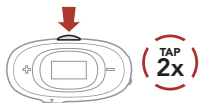


Two-way Intercom

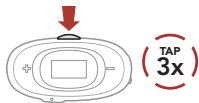
Start/End Conversation with the First Intercom Friend D



Start/End Conversation with the Second Intercom Friend C



Start/End Conversation with the Third Intercom Friend B

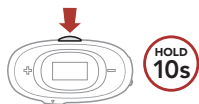


Intercom Conversation with Intercom Friend



Configuration Menu

Accessing the Configuration Menu



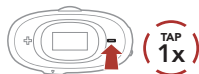
 "Configuration menu"



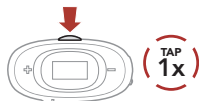
Navigating Between Menu Options



or

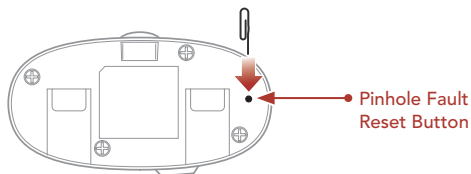


Execute Menu Options



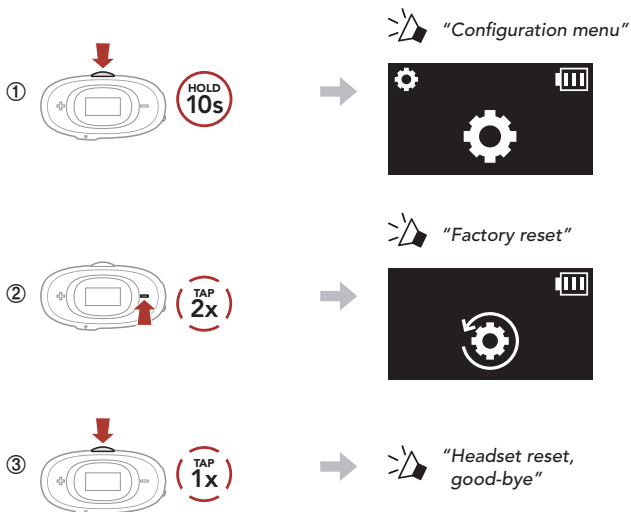
Troubleshooting

Fault Reset
































Note: Fault Reset will not restore the headset to factory default settings.

Factory Reset



Quick Reference

TYPE	OPERATION	BUTTON COMMANDS
 Basic Operations	Power on / Power off	     
	Volume up / Volume down	 or  
 Mobile Phone	Answer phone call	 
	End phone call	 
	Reject phone call	 
	Voice dial	 

TYPE	OPERATION	BUTTON COMMANDS
 Intercom	Intercom pairing	   
	Start/End intercom	 
	 Music	Play/Pause music
Track forward		 
Track backward		